

REICHENBACH LAMPWORKING CANE & FRIT

OPAQUE COLOURS



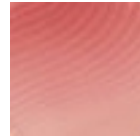
R-60
OPALINE



R-63
FLAMINGO



R-64
OPAL ROSE



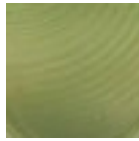
R-66
OPAL BRIGHT
PINK



R-69
CORAL



R-72
CELADON



R-70
GREEN



R-73
APPLE YELLOW



R-74
GRANNY APPLE
GREEN



R-78
CANARY YEL-
LOW



R-81
LIGHT BLUE



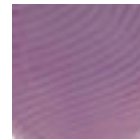
R-84
DUTCH BLUE



R-86
TURQUOISE



R-87
WATER BLUE



R-88
VIOLET



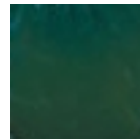
R-89
MARINE BLUE



R-97
LILAC RED



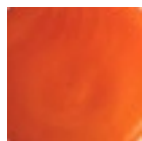
R-108
IRIS ORANGE
Reduces



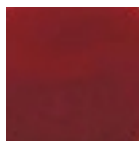
R-117
DARK GREEN



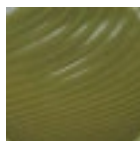
R-120
CURRY



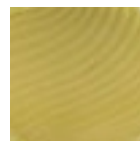
R-123
SOFT ORANGE



R-149
ROSE RED



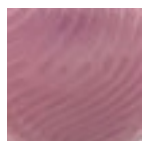
R-156
PALE OLIVE



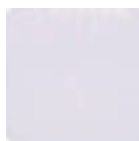
R-157
PISTACHIO
GREEN



R-161
LIGHT BEIGE



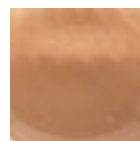
R-166
OPALINE PINK



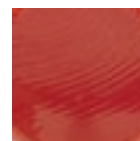
R-170
PASTEL BLUE
VIOLET



R-186
LIGHT YELLOW



R-187
CYAN GREY



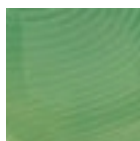
R-216
ANTIQUED RED



R-222
LIGHT TOBACCO
(Reduces)



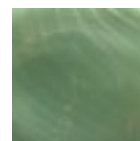
R-223
SIENNA



R-227
JADE GREEN



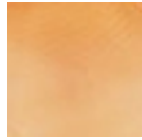
R-243
CZAR GREEN



R-245
CZAR BLUE

REICHENBACH LAMPWORKING CANE & FRIT

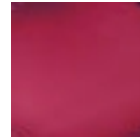
TRANSPARENT COLOURS



R-6
SALMON



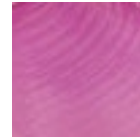
R-8
AURORA



R-9
FUSCHIA



R-10
VIOLET BLUE



R-11
HELIOTROPE



R-17
HONEY YELLOW



R-19
GOLD TOPAZ



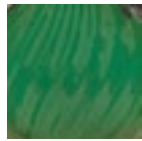
R-24
RESEDA GREEN



R-26
EMERALD
GREEN



R-30
TOURMALINE



R-35
PINE TREE
GREEN



R-41
DARK BLUE



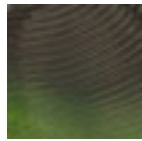
R-47
AQUAMARINE



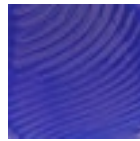
R-51
BROWN



R-53
OLIVE GREEN



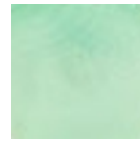
R-59
AVENTURINE
GREEN



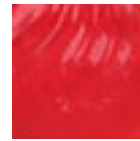
R-91
LAPIS BLUE



R-129
BRONZE



R-136
IRIS GREEN
(Reduces)



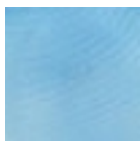
R-139
STRAWBERRY



R-140
ORANGE



R-143
GARNET



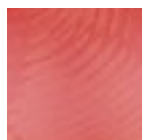
R-145
IRIS BLUE
(Reduces)



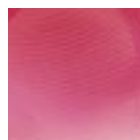
R-215
GOLD BROWN
(Reduces)



R-218
IRIS GOLD
(Reduces)



R-231
BRILLIANT RUBY



R-232
CRANBERRY
PINK



R-8904
SEA GREEN